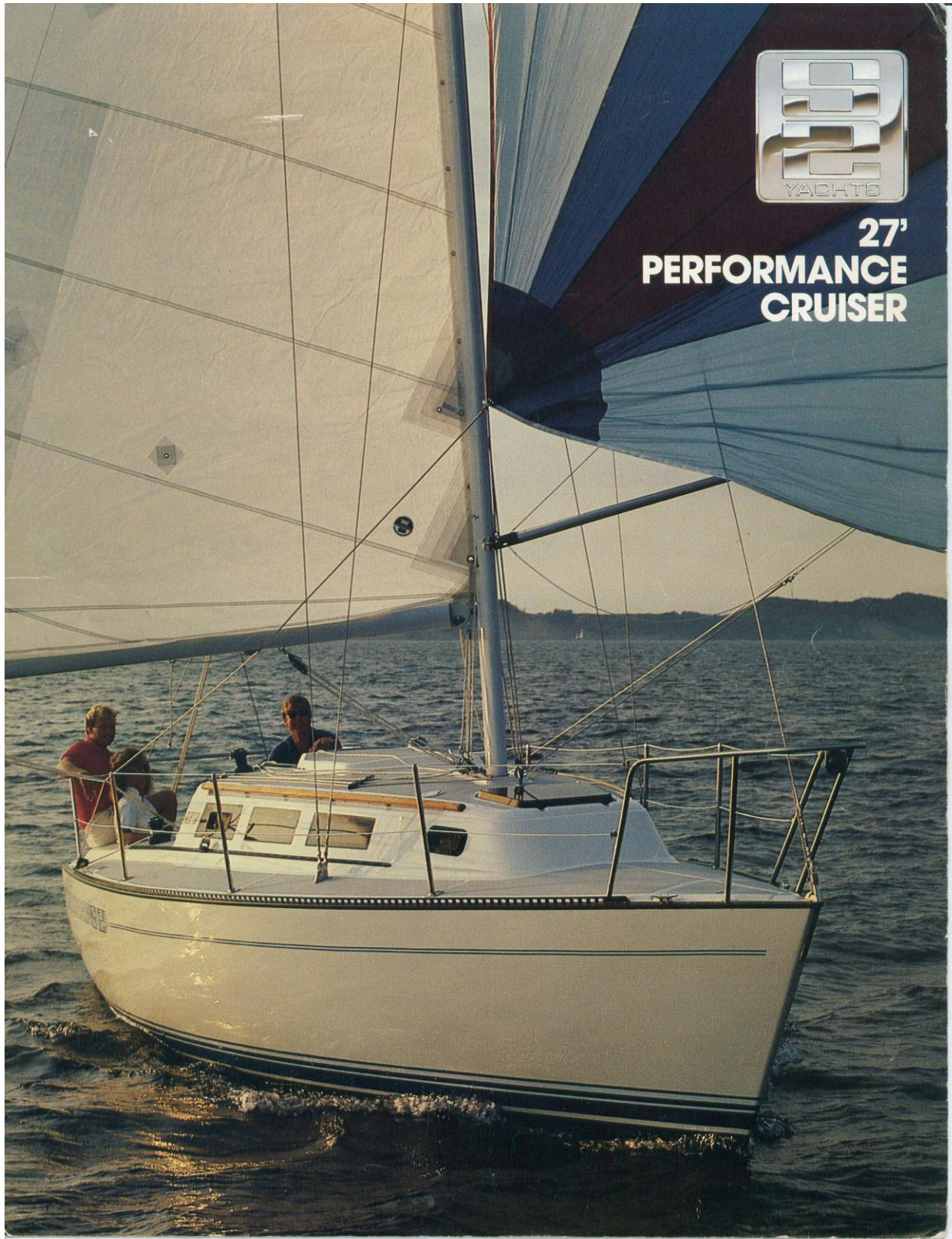




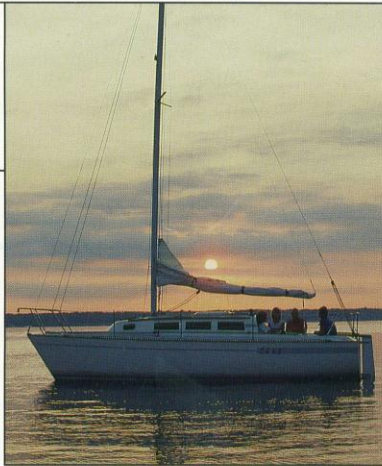
27'
PERFORMANCE
CRUISER



S2 YACHTS 27' PERFORMANCE CRUISER

Borne in the wake of the successful G & S racer-cruisers, the S2 27' incorporates S2 cruising attributes with the latest in materials technology and engineering to create the first of a whole new breed of faster, more highly-refined performance cruisers.

Designed around a full, stable hull form, the S2 27' features all the sailing performance that has made the Graham and Schlageter designed 7.9m/26' and 9.1m/30', eminently successful. A performance lineage that achieves speed and easy sailing characteristics unpre-



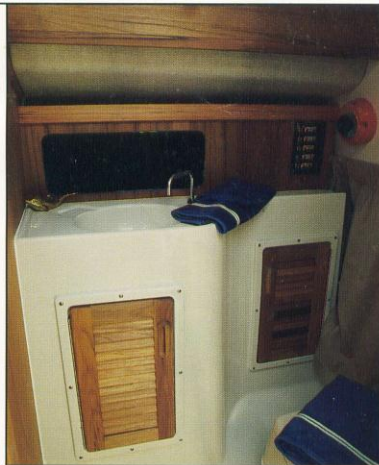
cedented in a performance cruiser. Technological refinements such as the use of AME 4000 Modified Epoxy Resin with the latest in reinforcement fabrics and a balsa core hull and deck permit a hull configuration that maintains strength and shape, while achieving the lighter weight necessary for fast, responsive performance. Stability is enhanced by the 27's low profile design and broad beam, with a favorable ballast to weight ratio.

Design simplicity is the key to the 27's sailing enjoyment. All sailing controls are led off to a large contoured, self draining cockpit, contributing to her sailing ease and "big boat" feeling. Outboard rudder and cabintop mainsheet system keep the cockpit free of obstructions. Single spreader masthead rig with large mainsail creates excellent sail control for even singlehanded sailing under a wide range of wind and sea conditions.



While the 27 proves a quick, responsive performer, she remains far from a "stripped-out" racer. The same hull form that adds to her performance has permitted a richly appointed and space-innovative interior. A new modular interior grid enhances structural integrity, opens up space potential, and creates a virtually maintenance-free interior with many more finished surfaces. With sleeping space for five, a spacious U-shaped galley, and fully enclosed head, the S2 27 offers exceptional cruising advantages in a boat her size.

Engineering excellence and advanced construction techniques that set the standard for the industry assure integrity and enduring value. In her remarkable comfort, incomparable performance, and attention to detail, the 27 offers a level of quality that could only be achieved by a boat builder like S2 Yachts.



SPECIFICATIONS

L.O.A.	26'7"
L.W.L.	23'4"
Beam	9'3"
Deep Draft	4'9"
Shoal Draft	3'10"
Displacement	5000 lbs.
Ballast	2100 lbs.
Sail Area	342 sq. ft.
Mast Ht. Above D.W.L.	37'6"
Headroom	6'0"
Berths	5
Cockpit Length	7'6"
Designers	G&S



STANDARD EQUIPMENT

HULL Hand-laid fiberglass with AME 4000 Modified Epoxy Resin and Contourkore® end-grain balsa core sandwich construction • External lead ballast—2100 lbs. • Hull color: Gull White with gelcoat bootline, accent cove stripe • Bronze seacocks on all thru-hull fittings • Horizontal hull/deck joint with aluminum rubrail/slotted toe rail track • Harken® outboard rudder.

MECHANICAL Tiller steering with varnished laminated filler • Master battery switch with battery box • Master switch panel—fused • Four interior decorator cabin lights • International navigation lights • Anchor light • Bilge pump, cockpit-operated manual (gusher type).

DECK Hand-laid fiberglass with AME 4000 Modified Epoxy Resin and Contourkore® end-grain balsa core sandwich construction • Deck color: Gull White (contrasting non-skid colors optional) • S2 custom non-skid deck and cockpit surfaces • Self-bailing cockpit with contoured seats and backrests • S2 translucent acrylic sliding companionway hatch with S.S. safety handrail and brass lock • Solid teak bentboards are weather

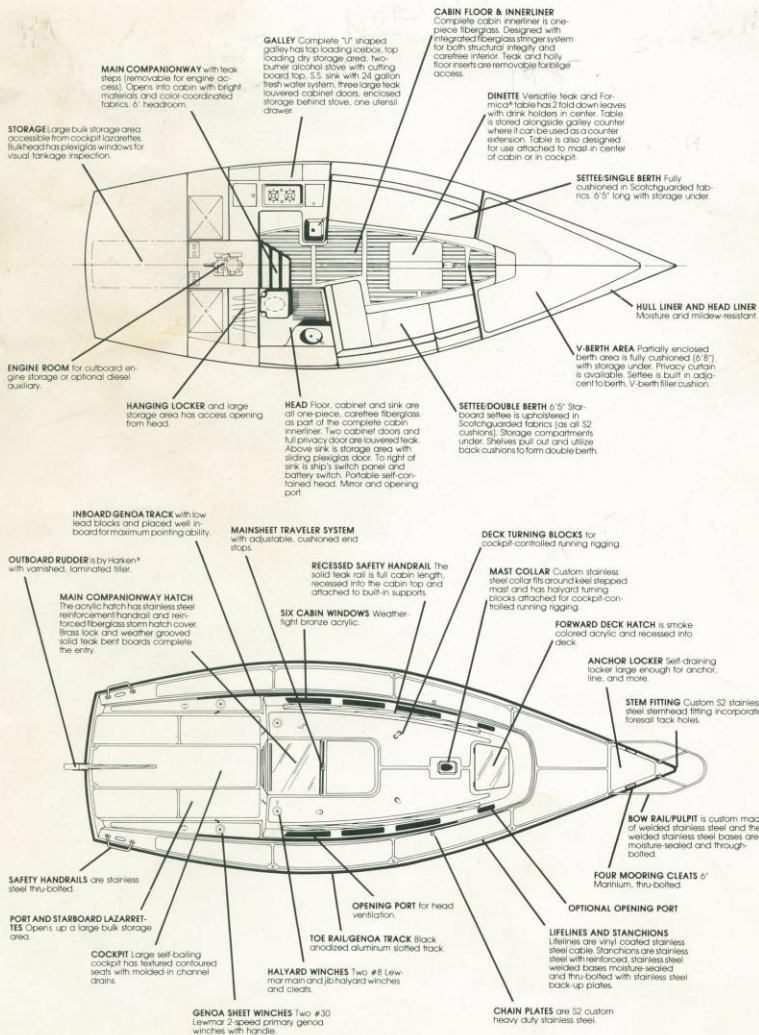
grooved • Two rugged cockpit lockers • Four 6" Marinium® mooring cleats • Custom S.S. bow pulpit with welded bases and thru-bolts • Six custom S.S. lifeline stanchions thru-bolts with S.S. back-up plates, with single lifeline cable and S.S. pelican hooks • Heavy-duty S.S. chain plates with custom forward stanchion plate • S2 EXCLUSIVE: Six large weather-tight bronze acrylic main cabin windows • Forward hatch is smoke colored acrylic and recessed into deck • S2 EXCLUSIVE: 11" long recessed, "non-trip" teak handrails with S.S. supports • Forward anchor locker, self bailing.

INTERIOR "First-Mate Approved" color coordinated U-shaped galley, top loading icebox, top loading dry storage, two-burner alcohol stove with cutting board top, S.S. sink with 24 gallon fresh water system, three large teak lowered cabinet doors, enclosed storage behind stove, one utensil drawer • **DINETTE** Versatile teak and Formica® table has 2 fold down leaves with drink holders in center. Table is stored alongside galley counter where it can be used as a counter extension. Table is built in adjacent to use attached to mast in center of cabin or in cockpit. • **SETTEE SINGLE BERTH** Fully cushioned in Scotchgrained fabrics, 6'5" long with storage under. • **SETTEE DOUBLE BERTH** 6'5" Starboard settee is upholstered in Scotchgrained fabrics (as all S2 cushions). Storage compartments under. Shelves pull out and utilize back cushions to form double berth.

liner • Color coordinated fully enclosed head, full teak door, portable self-contained head, vanity sink locker with door and vanity storage compartments, and one opening port • Solid teak trim and bulkheads • Large hanging locker • Six large underberth storage lockers, gelcoat finished.

SPAR, DECK GEAR AND RUNNING RIGGING

Keel stepped masthead spar with Awl-grip® coating • Internal reef system • Internal outhaul system • Internal main halyard lead aft to cockpit • Internal jib halyard lead aft to cockpit • Fixed boom topping lift • One pair airfoil spreaders • S.S. mast collar for halyard turning blocks • Complete S.S. standing rigging • 7/32" 1x19 cable with #7 S.S. tumbuckles • Complete Samson® running rigging • Mainsheet system—4:1 • Mainsheet traveler system w/rubber cushioned adjustable stops mounted on reinforced fiberglass storm hatch cover • Inboard genoa track w/low lead blocks • Two #30 Lewmar® 2-speed primary genoa sheet winches • Two #8 Lewmar® halyard winches • Winch handle • Complete Schaefer® deck gear • Official S2 burgee.



SAILMAKERS GUIDE

Mainsail Area 172 sq. ft.
100% Jib 170 sq. ft.
Reefing Points One Set Std.
Main Tunnal Size 1/2"
Mainsail Feeder Type	... Slugs or Boltrope
Tack Fitting Set Back 1 1/4"
Tack Fitting Set Down 1/4"
Boom Tunnel Size 1/2"
Type of Luff Slide 7/16"
"I" Dimension 34.0'
"J" Dimension 10.0'
"P" Dimension	28.67'
"E" Dimension	12.0'



S2 Yachts, Inc.
725 East 40th St.
Holland, MI 49423
616-392-7163
TWX 810-292-6171

REFINING THE SCIENCE OF SAILING.

Send for a free brochure or a \$5.00 catalog on all other S2 models.

The PERFORMANCE CRUISERS: 36'A, 36'C, 30'A, 30'C, 24', and the RACER/CRUISERS: 10.3/34', 9.1/30', 7.9/26', 6.9/22'.